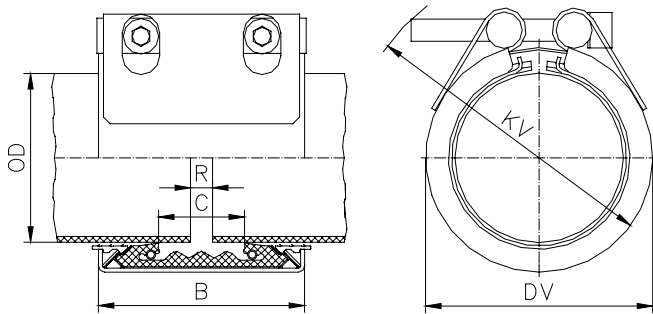


STRAUB-PLAST-GRIP Ø 40.0 - 160.0 mm

Components / Materials	W1	W2	W4	W5
Casing		AISI 304	AISI 304	
Bolts		AISI 4135	A4 - 80	
Bars		AISI 12 L 14, galvanised	AISI 304	
Anchoring rings		AISI 301 / 304	AISI 304	
Strip insert (option)		AISI 316 L / PVDF	AISI 316 L / PVDF	
Sealing sleeve EPDM	Temp.: -20°C up to +100°C Medium: all qualities of water, waste water, air, solids and chemical products			
Sealing sleeve NBR	Temp.: -20°C up to +80°C Medium: water, gas, oil, fuel and other hydrocarbons			



OD [mm]	Clamping range [mm]	PS [bar]	B [mm]	C [mm]	DV [mm]	KV [mm]	R without strip insert [mm]	R with strip insert [mm]	Torque rate [Nm]	Allen head [mm]	Thread M...
40.0	39.0 - 40.5	16.0	61	19	60	90	5	5-15	15	6	8
50.0	49.0 - 50.5	16.0	61	61	70	100	5	5-15	15	6	8
63.0	62.0 - 64.0	16.0	76	76	85	115	5-10	5-20	20	6	8
75.0	74.0 - 76.0	16.0	94	94	99	137	5-10	5-25	25	8	10
90.0	89.0 - 91.0	16.0	94	94	118	152	5-10	5-25	25	8	10
110.0	109.0 - 111.0	16.0	94	94	135	167	5-10	5-25	25	8	10
114.3	113.0 - 115.0	16.0	94	94	139	172	5-10	5-30	25	10	12
125.0	124.0 - 126.0	16.0	94	94	152	185	5-15	5-30	60	10	12
140.0	139.0 - 142.0	16.0	108	108	168	200	5-15	5-30	60	10	12
160.0 ¹	159.0 - 162.0	16.0	109	109	188	215	5-15	5-25	60	10	12

Remarks:

- Follow fitting / disassembly instructions
- PS = Working pressure considering the application loads
Test pressure = PS x 1.5 (for example industry, water supply etc.)
- For the installation of pipes of pipes made of HDPE and PP, STRAUB stiffening rings are required
- Strip inserts are required for special applications

¹ Available in version W2 only

For IPS sizes in bold see technical manual for actual OD